

Local Control Accountability Plan (LCAP)

Morgan Hill Unified School District
COMMUNITY MEMBER ORIENTATION
JANUARY 22, 2014

Today's Meeting Objectives

- ▶ To gain an overview of the status of programs within the district
- ▶ To understand the role of Community Member within the LCAP work groups;
- ▶ To understand the timelines and expected outcomes of the work groups;

District Vision and Mission

► Our Vision

All students will receive an excellent education and be empowered to succeed in school. Our students will be prepared to achieve in our diverse, global society and to make meaningful contributions in their community. Students will become critical thinkers and problem solvers who can thrive in the challenges of the 21st Century.

► Our Mission

The Morgan Hill Unified School District's central purpose is to educate students. In partnership with parents and the community, we create learning environments where all students learn and are empowered to achieve their unique potential. We model and nurture civility, respect, compassion, personal responsibility, curiosity and integrity in an environment of diversity, equity, and service.

Who are we?



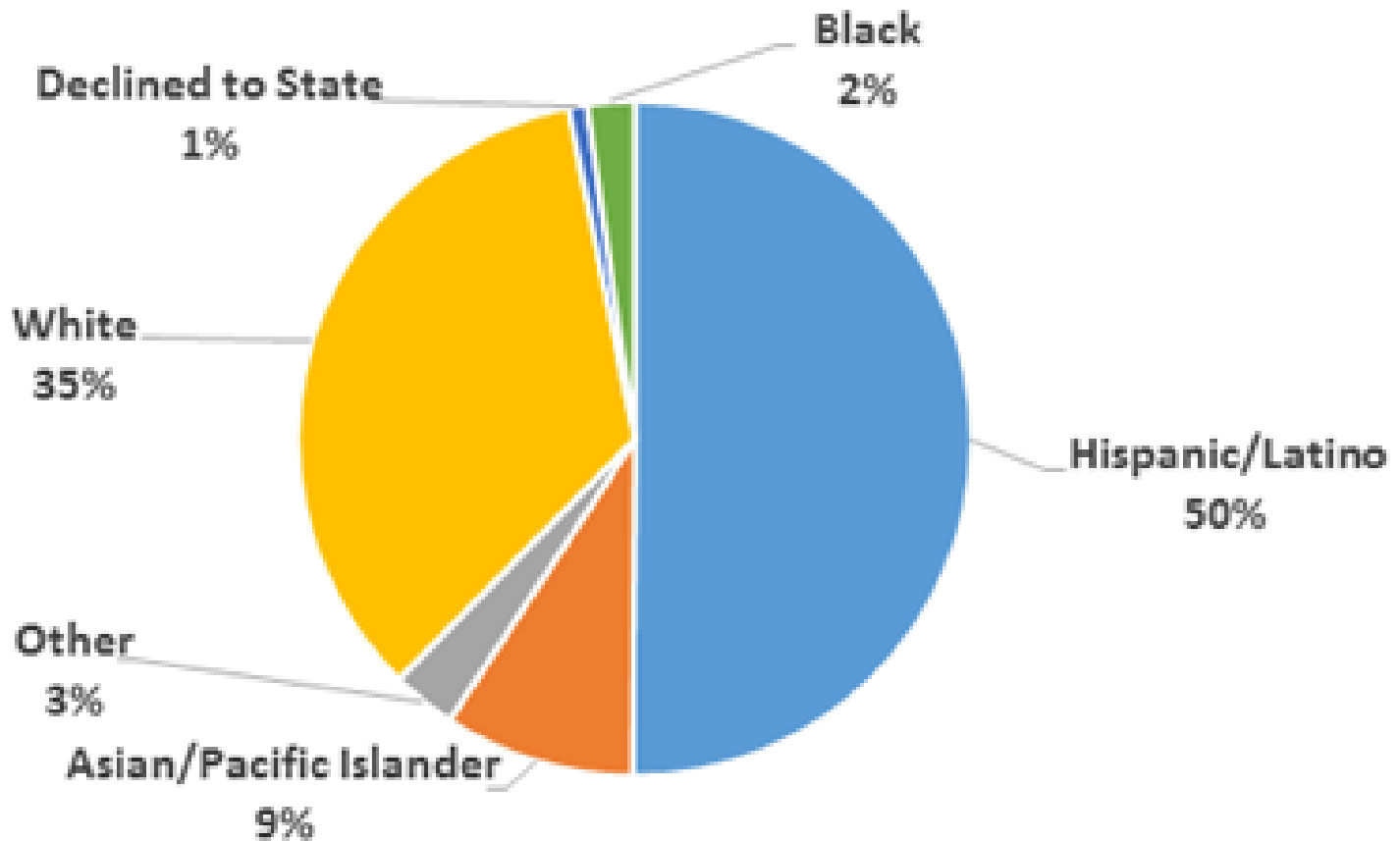
Who are we?

The Morgan Hill Unified School District encompasses 296 square miles and serves the ethnically diverse population of Morgan Hill, San Martin, a small portion of south San Jose, and areas of Santa Clara County from Bernal Road in San Jose south to Church Street in San Martin

- ▶ Student population: 8,700
- ▶ Fourteen schools:
 - ▶ 7 Elementary Schools (K-6)
 - ▶ 1 Elementary/Middle School (K-8)
 - ▶ 2 Middle Schools (7-8)
 - ▶ 2 Comprehensive High Schools (9-12)
 - ▶ 1 Continuation High School (10-12)
 - ▶ 1 Community Adult School

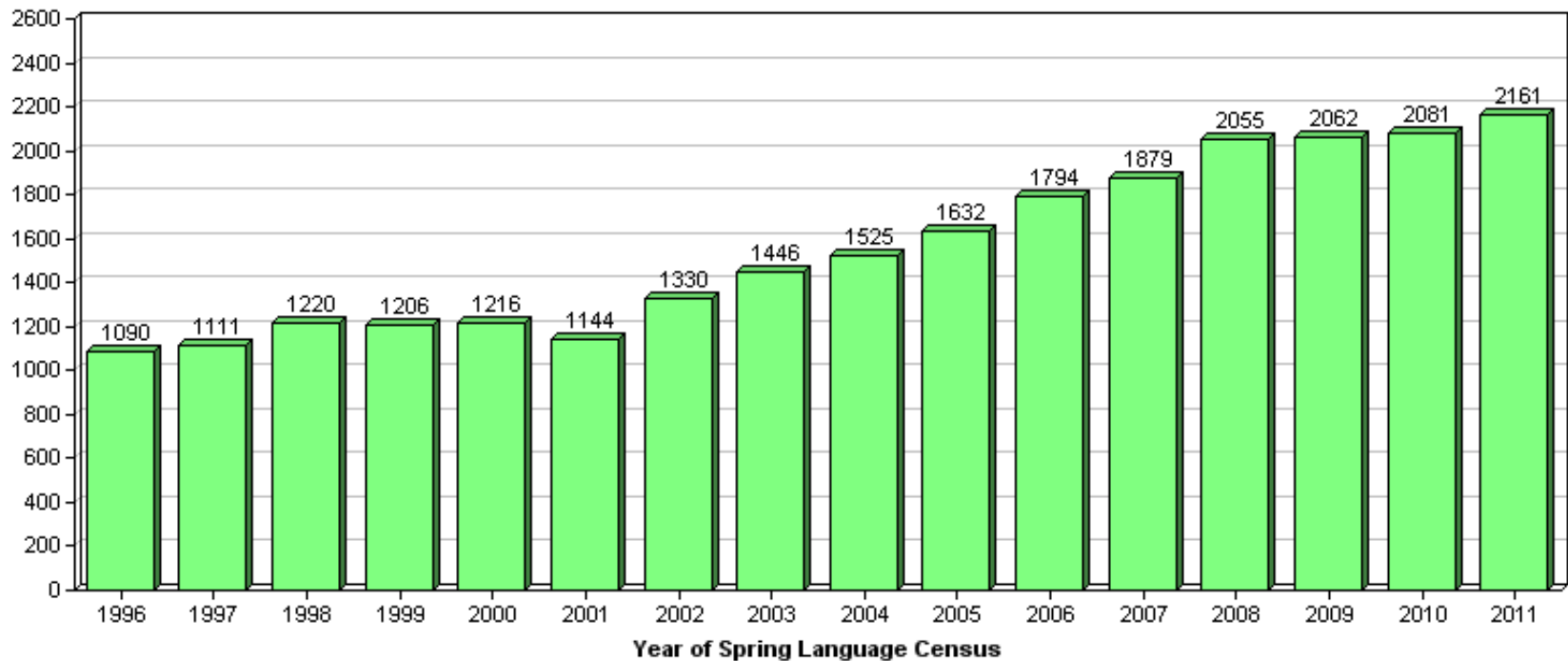
Who are we?

MHUSD Students' Ethnic Breakdown 2013-14



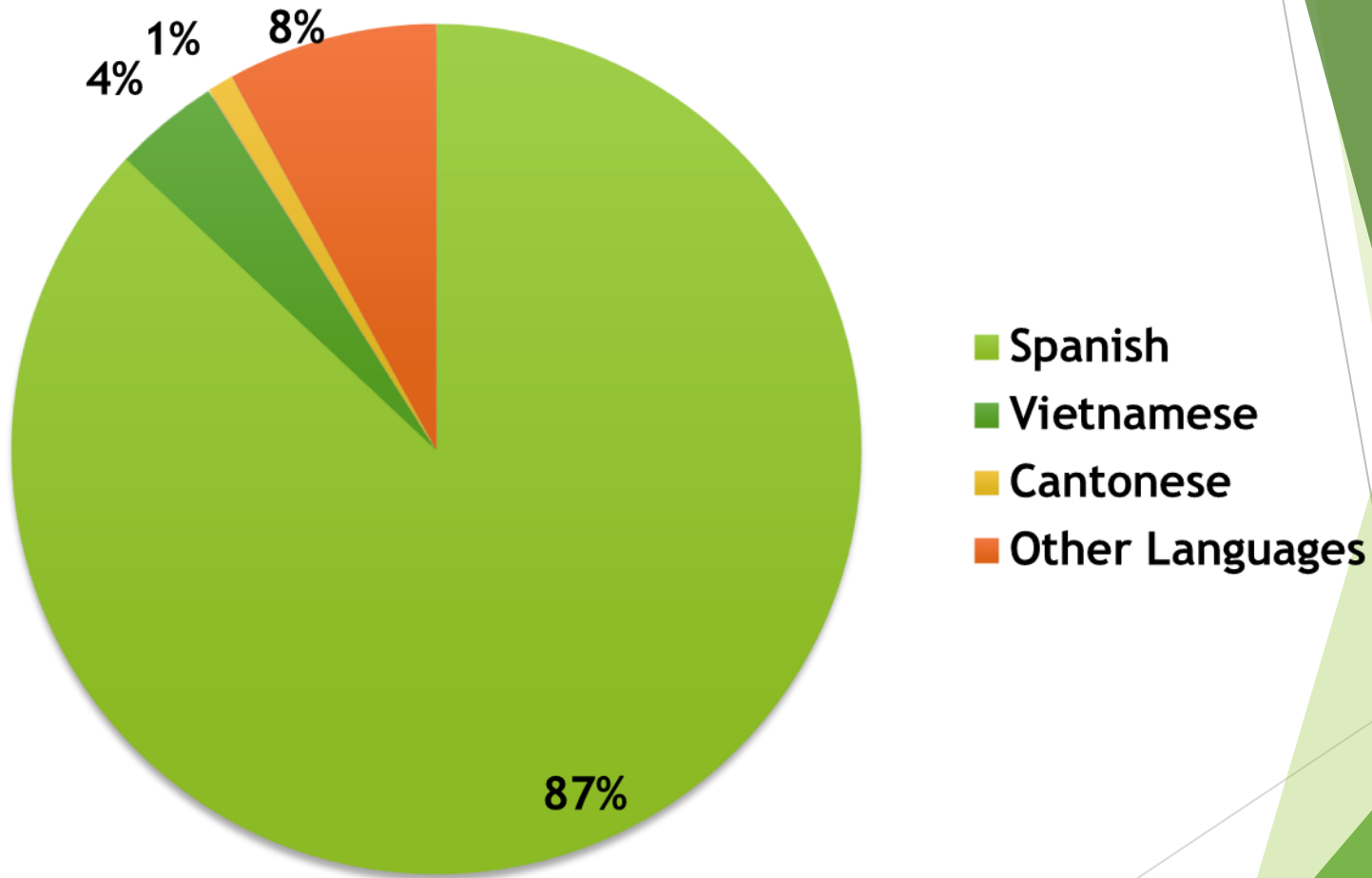
English Learner (EL) Population

Number of English Learners for Morgan Hill Unified



2012
2083 EL Students⁷

Languages in MHUSD of Our English Learner Students



COMMUNITY & PARTNERSHIP

Site Schools

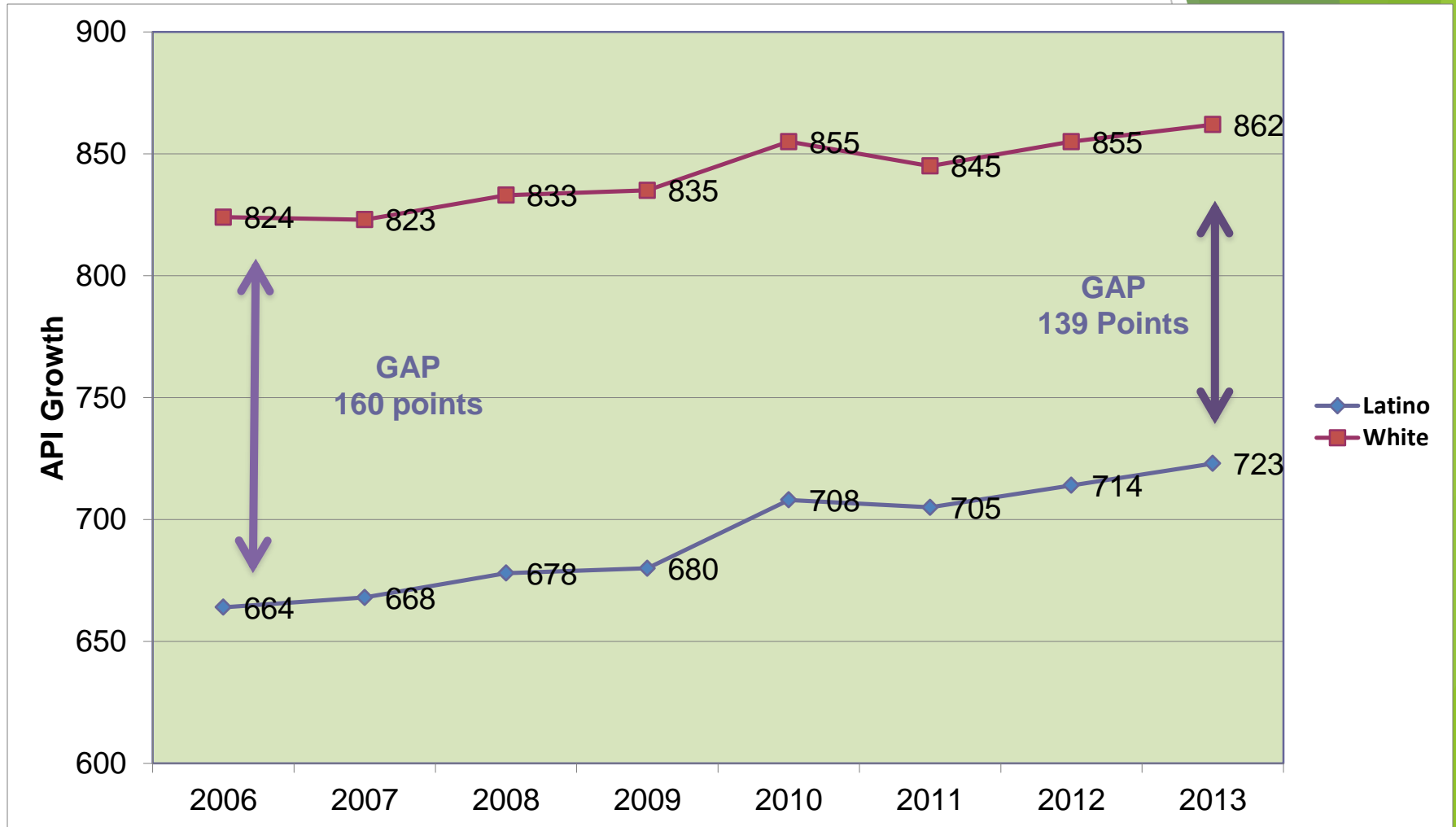
- ▶ Home School Club
- ▶ School Site Councils, English Learner Advisory Committees (ELAC)

Strong Partnerships with Community Organizations

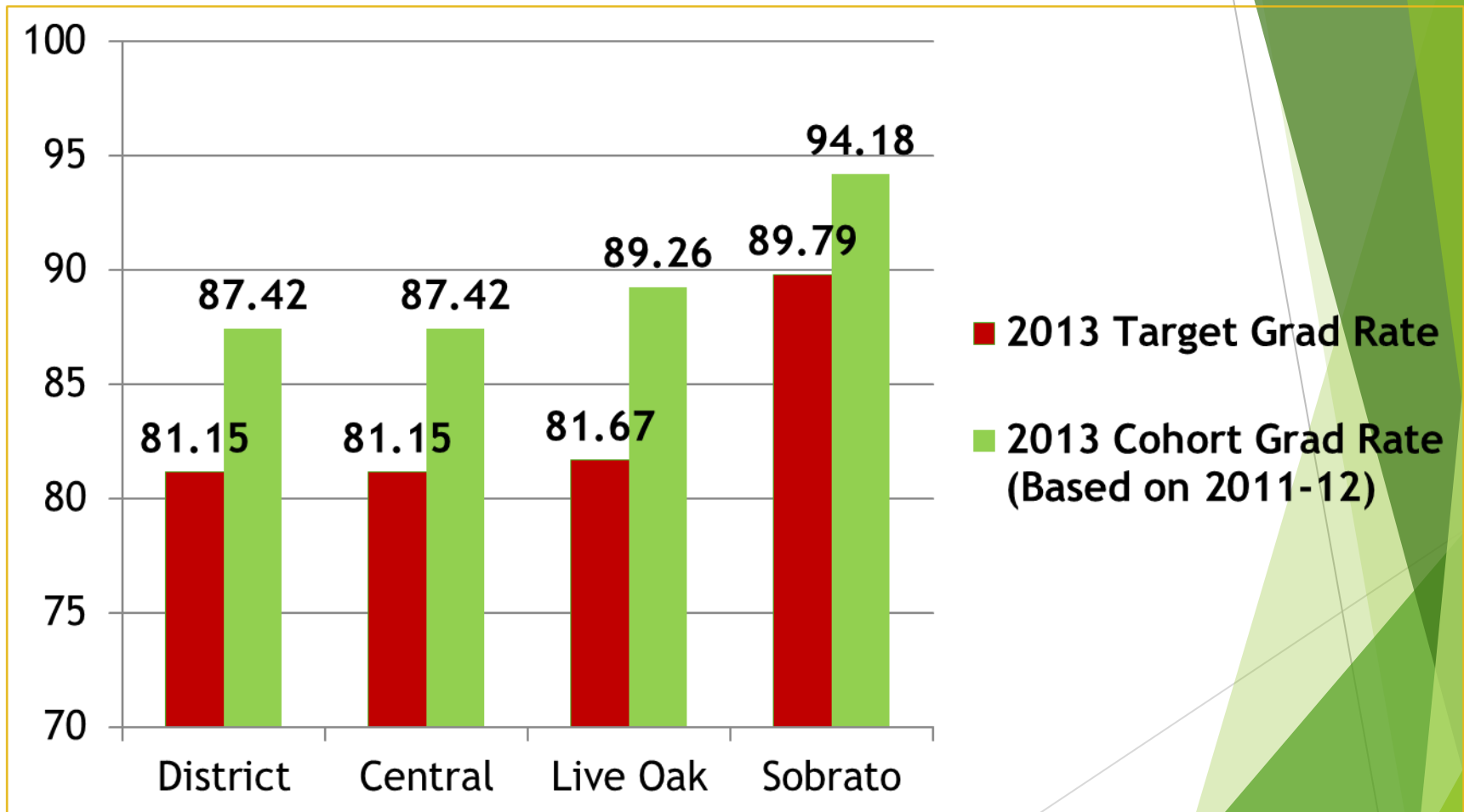
- ▶ Morgan Hill Chamber of Commerce
- ▶ Rotary International
- ▶ Community Solutions
- ▶ Local private counseling agencies
- ▶ Advance in Math
- ▶ YMCA
- ▶ AAUW (American Assoc of University Women)
- ▶ Local businesses including restaurants and wineries
- ▶ And many more!

Bargaining Units

Our Challenge: Closing the Gap



Graduation Rates 2013 (AYP)





**Making our Vision a reality
with LCFF!**

LCAP/LCFF

“To address funding inequities, LCFF (Local Control Funding Formula) will increase flexibility and accountability at the local level so those closest to the students can make the decisions and ensure that student needs drive the allocation of resources.”

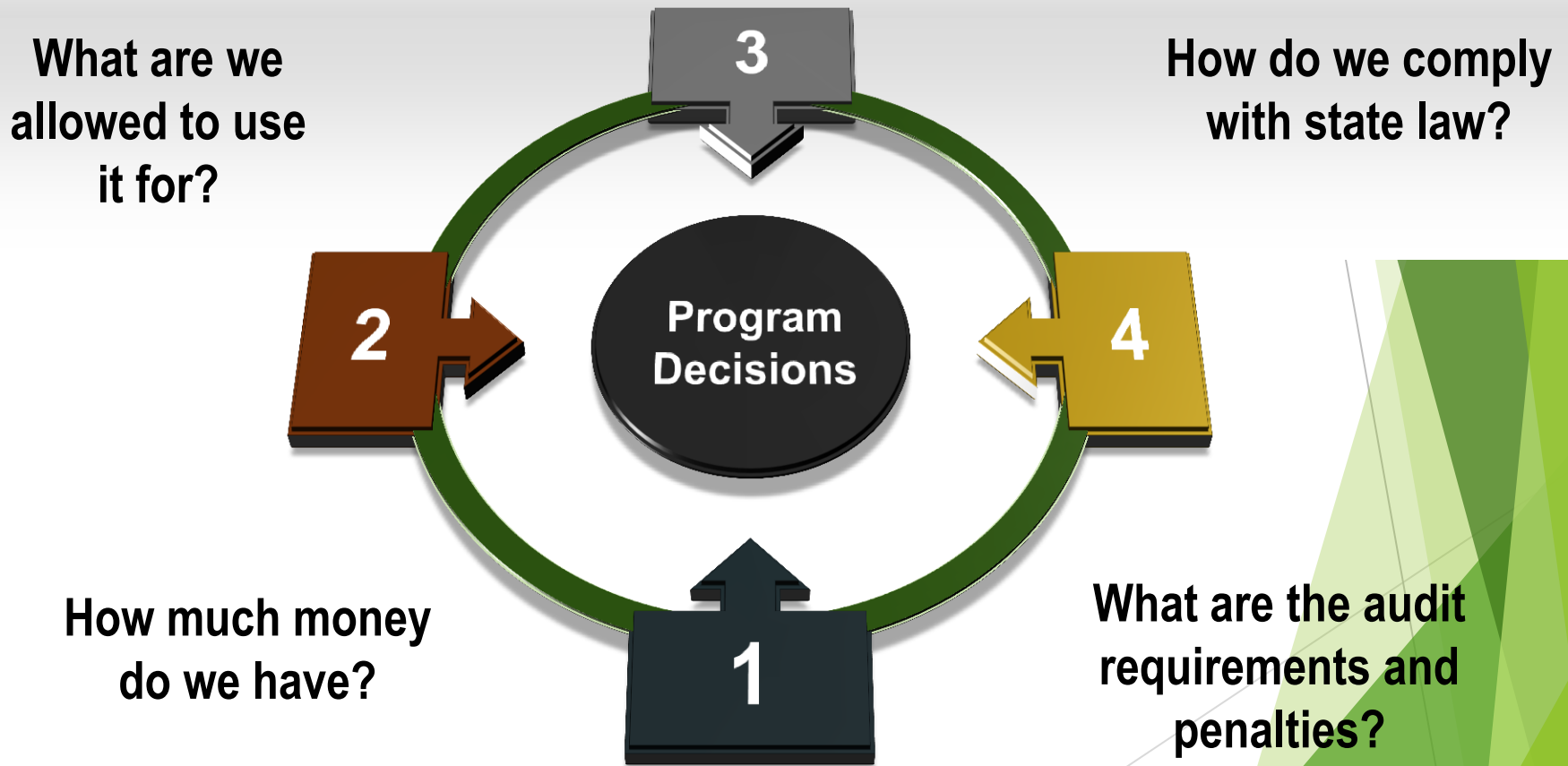
The LCAP Process Will:

- ▶ Create alignment
- ▶ Establish the key activities that actualize our vision and mission
- ▶ Identify our priorities and key strategies
- ▶ Help develop our collective identity

LCFF Background

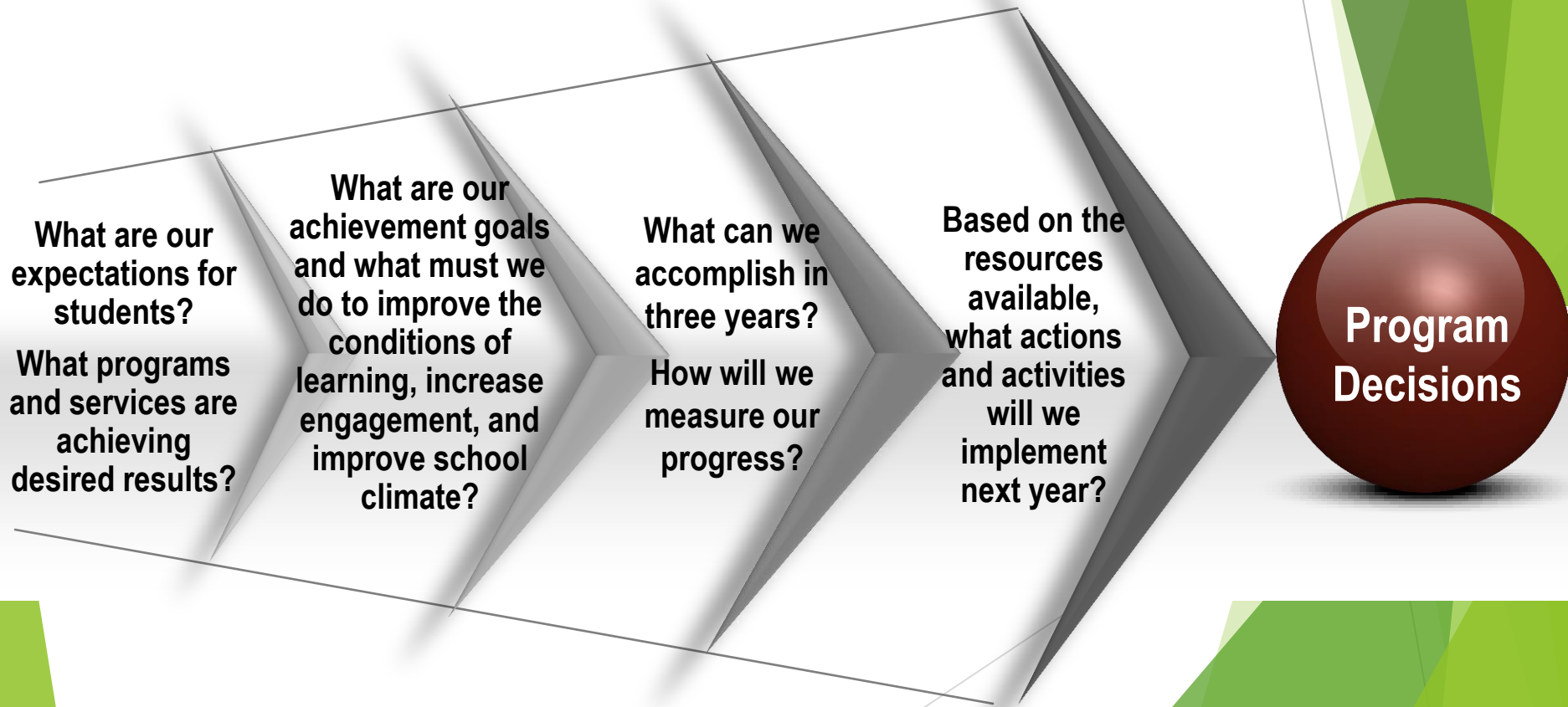
- ▶ The LCFF is as much about equity and justice for our neediest students as it is about subsidiarity
- ▶ The LCFF is designed to close the achievement gap by providing additional funds to support improved student outcomes and accountability
- ▶ The LCFF shifts the state away from a system of rule compliance, measured by audits and enforced through penalties, to a system of accountability based upon local needs, measured by progress toward annual goals, and explicitly linked to the LEA's budget
- ▶ We are no longer implementing the state's plan for eligible students - we must develop a plan locally that achieves improved results
- ▶ This will require that we think and plan differently

Our Old Paradigm Focused on Input



A New Way of Thinking

- ▶ The new system requires us to think first about outcomes
- ▶ No longer are you limited by what you can afford to do in a single year - start thinking about what you could accomplish in three years



LCAP Requirements

- ▶ The LCFF accountability system requires that LEAs develop a three-year LCAP and annually update it
- ▶ The LCAP must
 - ▶ Identify goals based on state priorities for all students, “numerically significant subgroups”, students with disabilities, and eligible students
 - ▶ List annual actions that the LEA will implement in accomplishing the goal
 - ▶ Describe expenditures in support of the annual actions and where they can be found in the LEA’s budget
- ▶ The LCAP is intended to be an aligned, comprehensive plan

Three Categories for Planning Purposes

- ▶ The proposed LCAP template groups the eight state priorities into three categories for planning purposes

1

Conditions of Learning

- Priority 1 – Basic Conditions
- Priority 2 – Implementation of State Standards
- Priority 7 – Course Access

2

Pupil Outcomes

- Priority 4 – Pupil Achievement
- Priority 8 – Other Pupil Outcomes

3

Engagement

- Priority 3 – Parent Involvement
- Priority 5 – Pupil Engagement
- Priority 6 – School Climate

Video: LCAP Overview and Background

<http://lcff.wested.org/lcff-channel/episode-2/>

District Programs & Current Initiatives

- ▶ Implementation of the Common Core State Standards
- ▶ Focused Academies & Special Programs

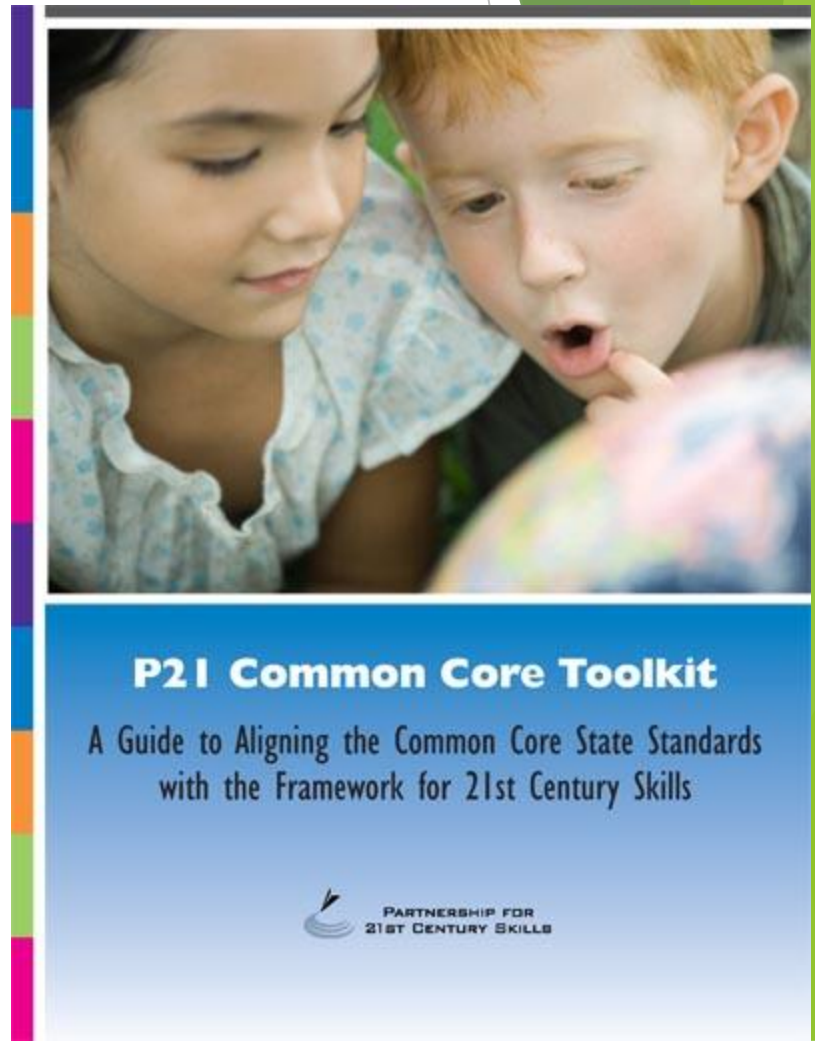
Implementation of the Common Core State Standards

- ▶ Internationally benchmarked
- ▶ Integrated Math approach
- ▶ Fewer standards, deeper learning
- ▶ Focus on application
- ▶ College and Career Readiness

21st Century Skills

- ▶ Critical Thinking
- ▶ Communication
- ▶ Collaboration
- ▶ Creativity
- ▶ Digital Literacy
- ▶ Global Awareness

Educational Services Department



Measure G

- ▶ Enhance technology at all sites
- ▶ Improved facilities



Focused Academies and Special Programs

- ▶ **Dual Immersion and Multicultural Education (DIME) @ SMG**
 - ▶ Development of bi-literacy in two languages
 - ▶ Global/Multicultural awareness
 - ▶ Academic achievement
- ▶ **Focused Academies: Science, Technology, Engineering and Mathematics (STEM)**
 - ▶ Walsh: Technology and Art
 - ▶ San Martin Gwinn: Environmental Science
- ▶ **Jackson Academy of Math and Music**
- ▶ **Alternative Programs**

“Create your future
from your future, not
your past.”

— Werner Erhard

